

GENERAL POWER NOTES:

1. ALL ELECTRICAL DEVICES AND ASSOCIATED OUTLET BOXES SHALL BE FLUSH MOUNTED UNLESS OTHERWISE NOTED. ALL CONDUIT AND WIRING SHALL BE CONCEALED WHERE PHYSICALLY POSSIBLE, SURFACE RACEWAY SHALL ONLY BE PERMITTED WHERE NOTED.
2. PROVIDE (1) NO. 10 AWG NEUTRAL CONDUCTOR FOR ANY 20 AMP SINGLE PHASE CIRCUITS SHARING A NEUTRAL IN A SINGLE CONDUIT. WHERE MULTIPLE BRANCH CIRCUITS ARE USED, PROVIDE SIMULTANEOUS DISCONNECTING MEANS IN PLACE OF SINGLE POLE BREAKERS.
3. PROVIDE AN EQUIPMENT GROUNDING CONDUCTOR WITHIN THE RACEWAYS ALONG WITH PHASE CONDUCTORS FOR ALL FEEDERS AND BRANCH CIRCUITS. CONDUIT IS NOT PERMITTED TO ACT AS AN EQUIPMENT GROUNDING CONDUCTOR UNLESS NOTED. AN ISOLATED GROUND CONDUCTOR (GREEN/WHITE) IS REQUIRED FOR ALL ISOLATED GROUND CIRCUITS.
4. WHENEVER 4 OR MORE CURRENT CARRYING CONDUCTORS ARE INSTALLED IN A SINGLE RACEWAY, E.C. SHALL INCREASE CONDUCTOR SIZE AS REQUIRED FOR DERATING PER NEC 310.15(B)(2)(a).
5. GROUND FAULT INTERRUPTING DEVICES SHALL BE INSTALLED IN ACCESSIBLE LOCATIONS AND NOT ALLOWED BEHIND FIXED OR UNMOVABLE EQUIPMENT. REMOTE DEVICES MAY BE REQUIRED.
6. ALL CIRCUITS SHALL USE A MINIMUM OF 12 AWG FOR 20 AMP CIRCUITS UNLESS OTHERWISE NOTED. ELECTRICAL CONTRACTOR SHALL CONFIRM CONDUCTOR AND CONDUIT SIZES PER VOLTAGE DROP, A MAXIMUM OF 3% FOR BRANCH AND FEEDER AND SIX OVERALL.

7. COORDINATE WITH OTHER TRADES FOR ANY ELECTRICAL DEVICE LOCATIONS PRIOR TO ROUGH-IN. COMPLY WITH ALL APPLICABLE CODES FOR PROPER MOUNTING HEIGHTS, NFPA, NEC, ADA, ETC.
8. WHERE LOW VOLTAGE DEVICES AND RECEPTABLES ARE SHOWN NEXT TO EACH OTHER, INSTALL AS CLOSE AS POSSIBLE, DO NOT SCALE DRAWINGS.
9. ALL "SPECIAL SYSTEMS" WIRING AND DEVICES (E. TELEPHONE, DATA, TV) SHALL BE PROVIDED AND INSTALLED BY OTHERS UNLESS NOTED ON PLANS OR SPECIFICATIONS. E.C. TO PROVIDE BOXES AND RACEWAYS PER LEGEND AND SPECIFICATIONS. COORDINATE EXACT REQUIREMENTS WITH MANUFACTURER/SUPPLIER.
10. ALL DISCREPANCIES WITH THESE DOCUMENTS SHALL BE BROUGHT TO THE ATTENTION OF THE ENGINEER FOR CLARIFICATION PRIOR TO BIDS. IN OTHERWISE DOING SO, THE ELECTRICAL CONTRACTOR SHALL BE LIABLE FOR ANY REQUIRED REVISIONS.
11. E.C. TO COORDINATE EXACT EQUIPMENTS OF ALL OTHER SYSTEMS WITH MANUFACTURER AND OTHER TRADES PRIOR TO ROUGH-IN AND PURCHASE OF ANY ELECTRICAL EQUIPMENT ASSOCIATED WITH SYSTEM. ANY DISCREPANCIES WITH THIS PLAN AND MANUFACTURER REQUIREMENTS SHALL BE BROUGHT TO THE ATTENTION OF THE ARCHITECT/ENGINEER PRIOR TO PURCHASE OR ELECTRICAL ROUGH-IN OF THIS EQUIPMENT.
12. ALL ITEMS SHOWN ON PLAN ARE NEW UNLESS MARKED AS (E) FOR EXISTING OR (R) FOR RELOCATED.

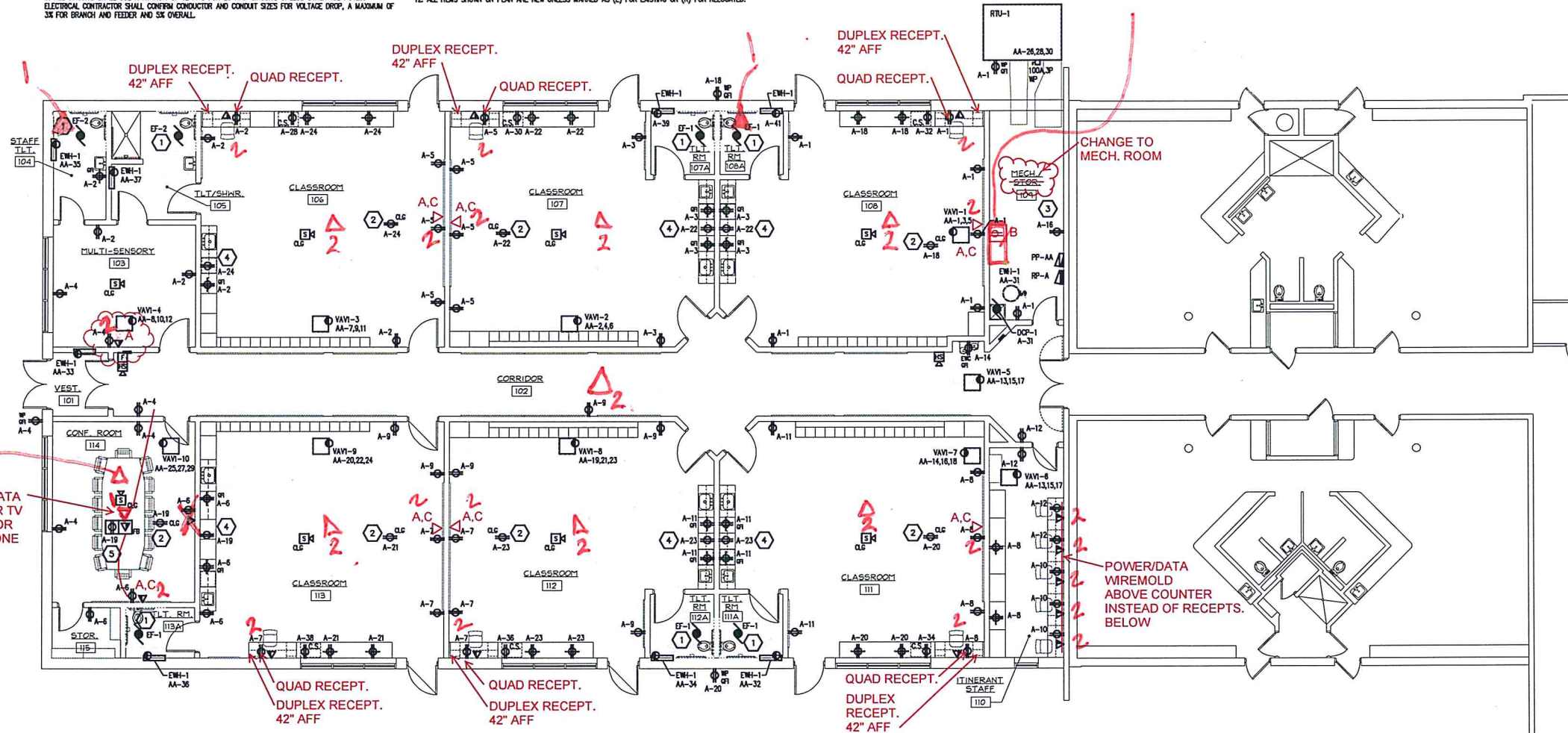
POWER KEY NOTES:

- 1 EXHAUST FAN TO BE CONNECTED TO LIGHTING CIRCUIT AND SWITCH.
- 2 COORDINATE LOCATION WITH PROJECTOR INSTALLER.
- 3 COORDINATE LOCATION WITH IDF RACK INSTALLER.
- 4 RECEPTACLE FOR UNDER COUNTER REFRIGERATOR, COORDINATE INSTALLATION WITH CASEWORK.
- 5 INSTALL 1" CONDUIT FROM DATA COMPARTMENT OF FLOOR BOX TO NEAREST WALL AND UP TO ACCESSIBLE CEILING SPACE.

56 TOTAL CAT6 DROPS

- A = 65" FLAT SCREEN TV LOCATION; POWER & NETWORK AT TV LEVEL (72"?), BEHIND TV
- B = MECH. ROOM; 20 AMP DEDICATED CIRCUIT FOR RACK. NEED BACKER BOARD AND WALL PENETRATION FOR 60 CABLES
- C = ANALOG CLOCK / PA SPEAKER DIRECTLY ABOVE TV; NEEDS CONDUIT

(2) UNDER FLOOR DATA CONDUITS; ONE FOR TV (CAT 6 SHIELDED FOR HDMI DONGLE / P); ONE FOR PHONE / DATA



ELECTRICAL POWER PLAN
SCALE: 1/8" = 1'-0"

THE INFORMATION ON THIS SHEET IS THE PROPERTY OF CARMI design group inc. AND MAY NOT BE REPRODUCED WITHOUT WRITTEN CONSENT FROM CARMI design group inc. Copyright 2018 ©

Signature
STATE OF MICHIGAN
SAYLES
ENGINEER
No. 38685
PROFESSIONAL ENGINEER

LEWIS
CASS ISD
BROOKSIDE
CLASSROOM
ADDITION

CASSOPOLIS
MICHIGAN

NO.	ISSUED	DATE

03 JANUARY 2019
DATE

PROJECT # 2018.016

DRAWN BY CHECKED BY
KS DMS

ELECTRICAL
POWER PLAN

E1.1